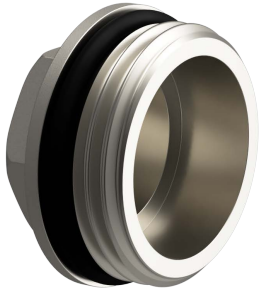


# S3 Manifold – 1” End Cap

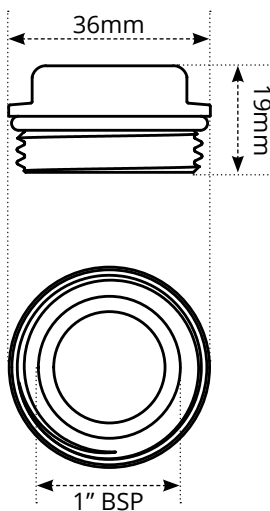
WHS-M-S3-ECAP



## Overview

1" male end cap is a fitting that is used to close off or seal the end of the Warmup S3 Manifold flow or return arms.

## Dimensions



## Contact

### Warmup plc

www.warmup.co.uk T: 0345 345 2288  
uk@warmup.com F: 0345 345 2299

Warmup plc ■ 704 Tudor Estate ■ Abbey Road ■ London ■ NW10 7UW ■ UK

Warmup GmbH ■ Ottostraße 3 ■ 27793 Wildeshausen ■ DE

Warmup - TS - S3 End Cap - V1.0 - 2023-05-04\_EN

**Warmup**